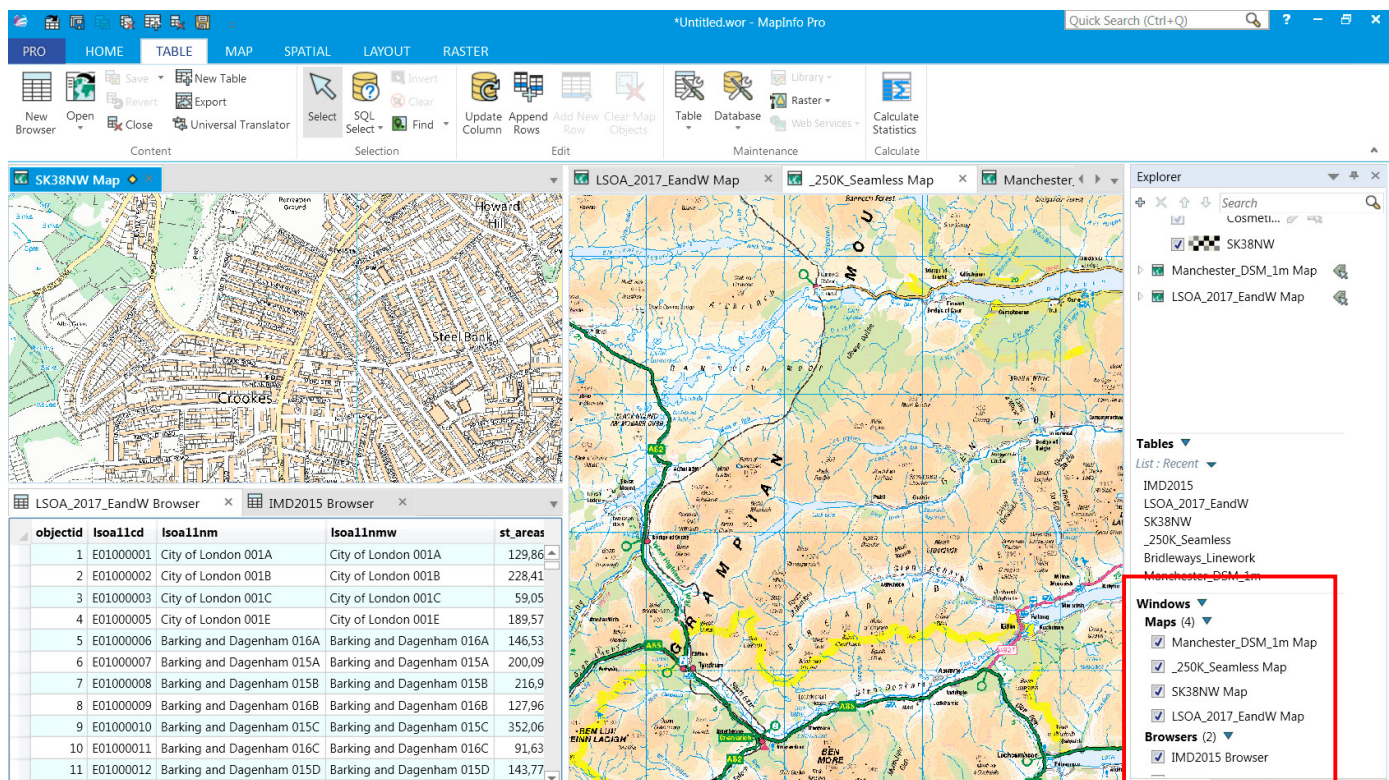


This Week's Wisdom:

Splitting Windows Horizontally & Vertically

Fed up of switching between tabs? Did you know that MapInfo lets you split your working area both vertically and horizontally, allowing you to have all your maps in view at the same time.



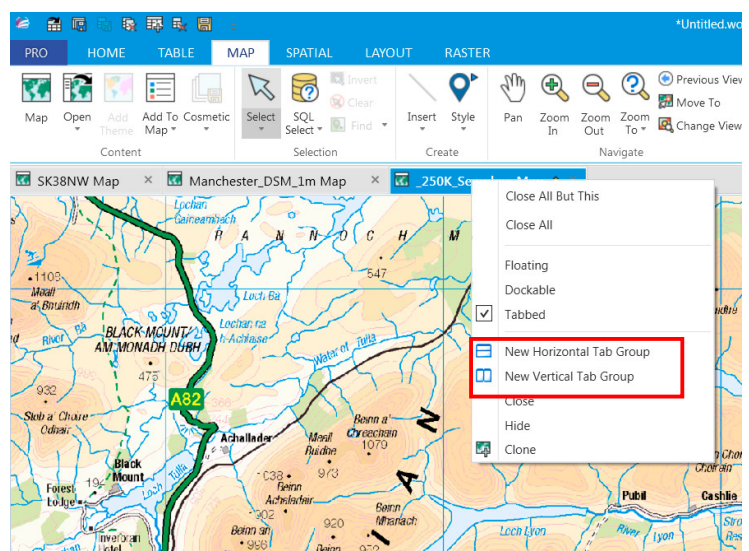
It's easy when you know how

To split your window, simply right click on any of your map tabs and select either **New Horizontal Tab Group** or **New Vertical Tab Group**.

That's great now how do I undo?

To get back to one single tab group, right click on the map tab again and select **Move To Previous Tab Group**. Alternatively, use the **Move To Next Tab Group** to push maps onto different groups. For example, in the above setup, using Move To Next Tab Group on the SK38NW map would merge both lefthand panes together.

You can also use the Hide button to hide the map from view altogether. Go to the Explorer > Window and select the maps checkbox to view the map again. Previously in 32-bit MapInfo, you may have minimised a window to achieve a similar outcome.



TOP TIP: You can just drag and drop the tabs from group to group too!