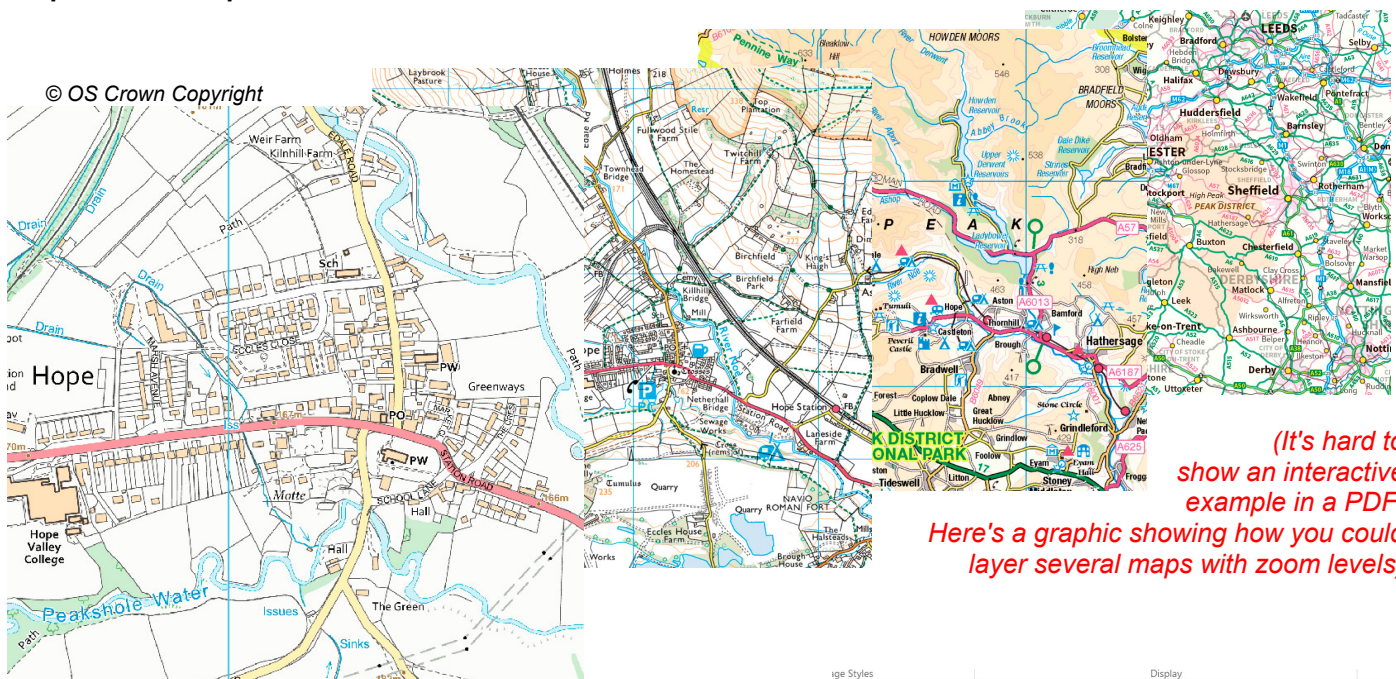


# This Week's Wisdom:

## Zoom Layering

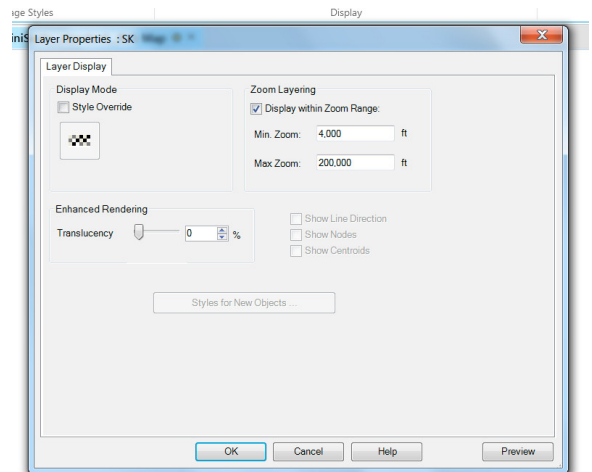
Zoom Layering allows you to layer multiple maps on top of each other which then only become visible at a certain zoom setting. There's no point displaying a 1:25,000 Scale Colour Raster map if you're viewing the whole country, the map detail would be so small it would be illegible. By the same token, zooming in too far on the 1:250,000 map just leaves you with a pixelated mess. With zoom layering you can choose which map is visible at which zoom level. This feature is used frequently in tile-based web maps but can also be replicated in MapInfo.



*(It's hard to show an interactive example in a PDF! Here's a graphic showing how you could layer several maps with zoom levels)*

### Setting it up

Right click on the map layer in the Explorer Panel and select Layer Properties. Navigate to the Zoom Layering section and enter your minimum and maximum zoom. You can find the map windows current zoom level by looking at the bottom left corner. That's it! Press okay and zoom in and out of your map to test the layers. Make sure your zoom levels are set so that the map scale



switches just before the layer becomes illegible. Once that map layer has been switched off, an asterisk will appear to the left of that layer in the Explorer Panel. This indicates that the layer isn't visible at the moment. Zoom layering can also be used with vector mapping. For example, point features and text could only be turned on at a close zoom level to avoid overcrowding when zoomed out. Like many other settings, the zoom settings are saved in your workspace file.

**TOP TIP:** You can also set up combined zoom ranges for multiple layers by holding down Ctrl when selecting the layers.

